



Product name

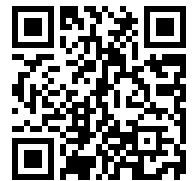
2-jaw puller for roller bearings, swedish model

For removing bearings, gears, discs, etc.

Art. No. 112-1

Series 112

EAN 4021176418143



	Technical attribute	Metric	Imperial
	Spread	10 - 55 mm	3/8 - 2 3/16 inch
	Depth	45 mm	1 3/4 inch
	Hexagon drive (male)	8 mm	
	Maximum load	1,5 t	1.5 US t
	Maximum torque	25 Nm	18 ft lb
	Weight	0.405 kg	
	Space below	5 mm	3/16 inch
	Space next to it	12 mm	1/2 inch
	Number of jaws	2	2



Technologies



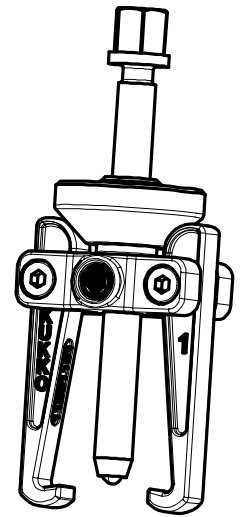
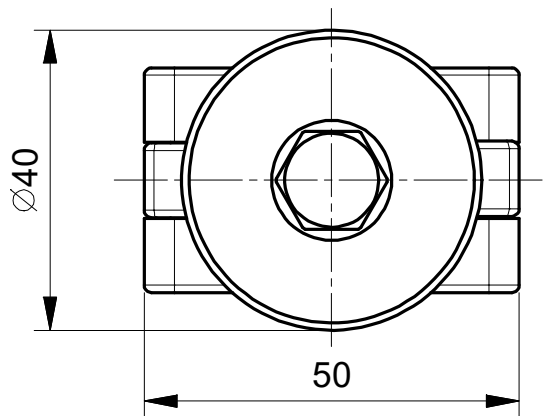
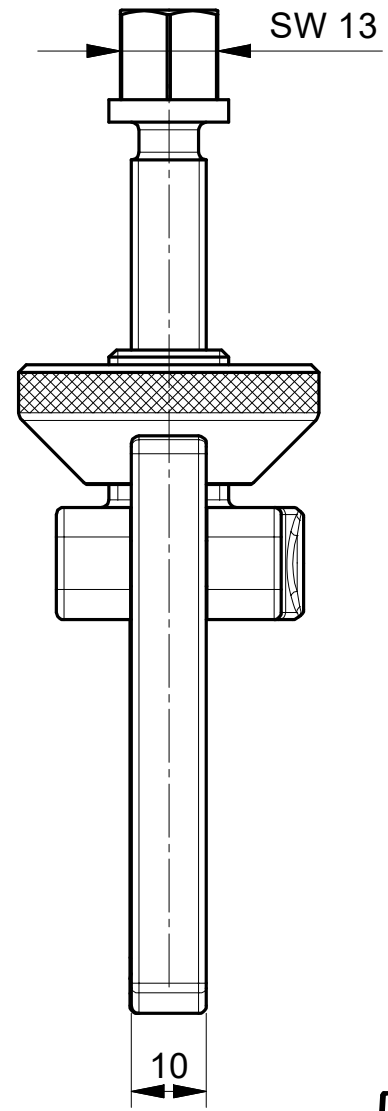
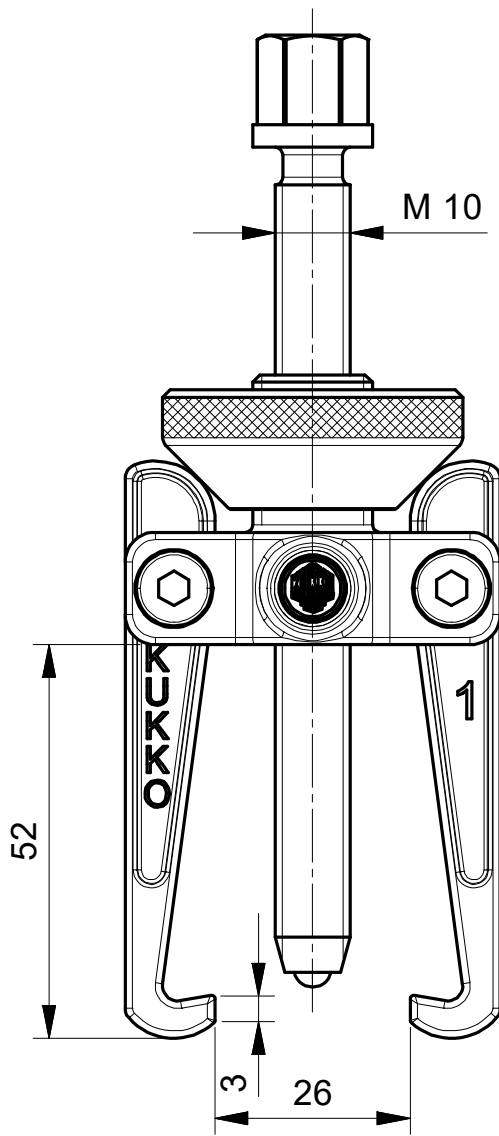
SWITCH

A two-sided spindle tip provides optimal adjustment of the spindle to the shaft.



Spare part

Art. No.	Product name
610110	Mechanical pressure spindle.
112-1-T	Cross-beam
112-1-45-P	2 pulling jaws (pair) with pins
112-1-33	Clamping ring



**Kleinbongartz
& Kaiser
oHG**
Werkzeugfabrik
Hilden - Germany

Dokumentname:
112-1_2-armiger Abzieher

Toleranz:
DIN ISO 2768-m

Dokumentbeschreibung:
Baugruppe

Material:
Hoch legierter Werkzeugstahl /
High alloy tool steel

Erstellt von:
Breidenbach

Erstellungsdatum:
05/07/2018

Maßstab:
1:1

Teilbeschreibung:
2-armiger Abzieher, schwedisches Modell/
2-jaw puller, swedish model

Wärmebehandlung / Härte:
vergüteter Stahl/ tempered steel

Oberflächenbehandlung:

Artikelnummer / ZNR.:
112-1

Dokumentversion:
-

Schutzvermerk
ISO 16016
beachten