



Product name *

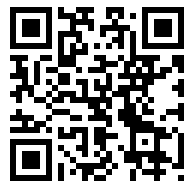
Pulling device

For use with series 17, series 15, series 18-AS and series 18-A.

Art. No. 18-0

Series 18

EAN 4021176075599



	Technical attribute	Metric	Imperial
	Distance of side screw	50 - 110 mm	2 - 4 3/8 inch
	Depth of side screw	71 - 150 mm	2 3/4 - 5 7/8 inch
	Thread	M10	M10
	Hexagon drive (male)	13 mm	
max.	Maximum load	3 t	3 US t
max.	Maximum torque	40 Nm	29.5 ft lb
	Weight	0.825 kg	



Technologies



SWITCH

A two-sided spindle tip provides optimal adjustment of the spindle to the shaft.



Spare part

Art. No.	Product name
612130	Mechanical pressure spindle.
18-0-T	Cross-beam
018175	Side bolt with nut

Accessories

Art. No.	Product name
18-0-AS	Set of screw adapters
18-003A	Threaded adapter
18-004A	Threaded adapter
18-005A	Threaded adapter
18-006A	Threaded adapter
18-008A	Threaded adapter
18-010A	Threaded adapter
18-012A	Threaded adapter
18-016A	Threaded adapter
19-1-P	2 extensions for pulling devices (pair)
K-600-014	Set of interchangeable pressure pads for KUKKO pressure screws



Goes with

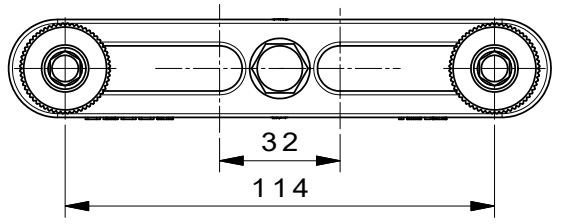
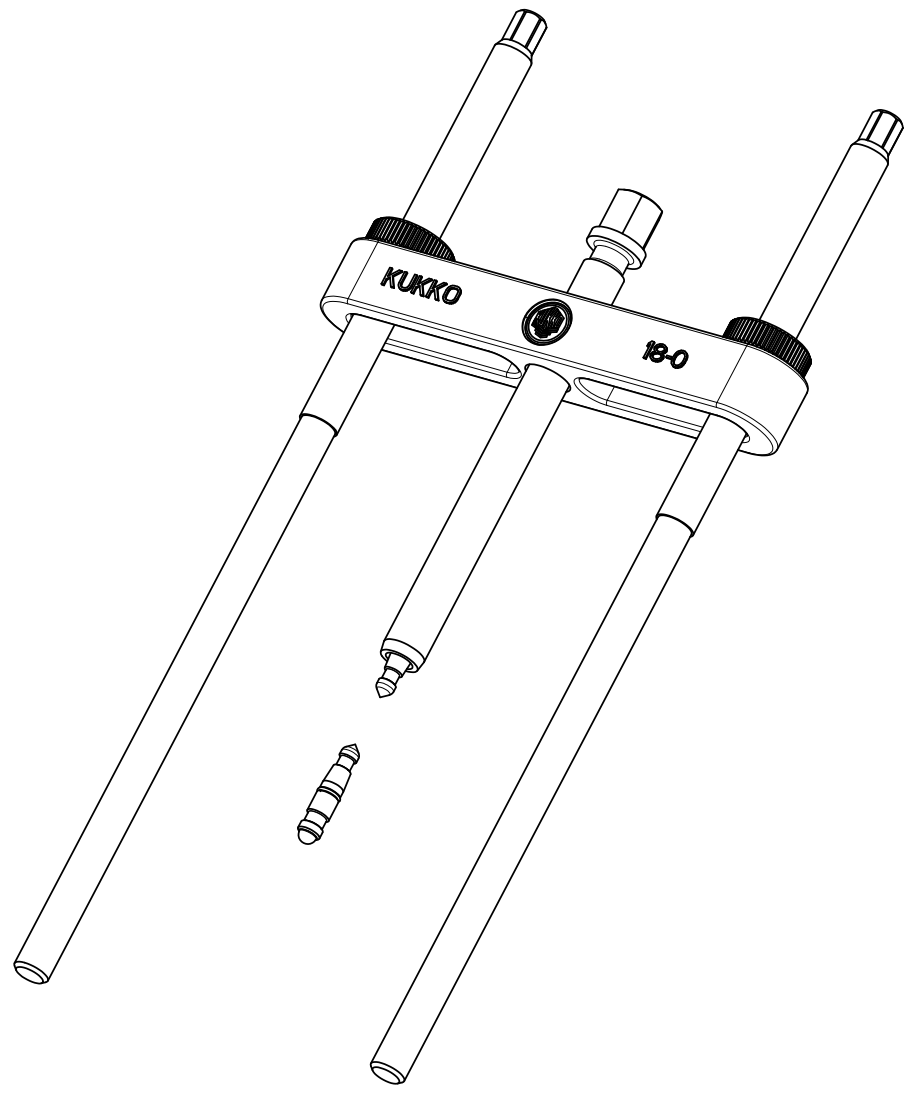
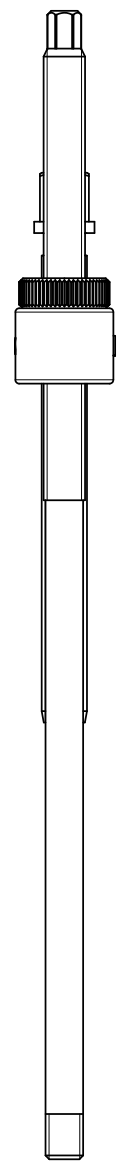
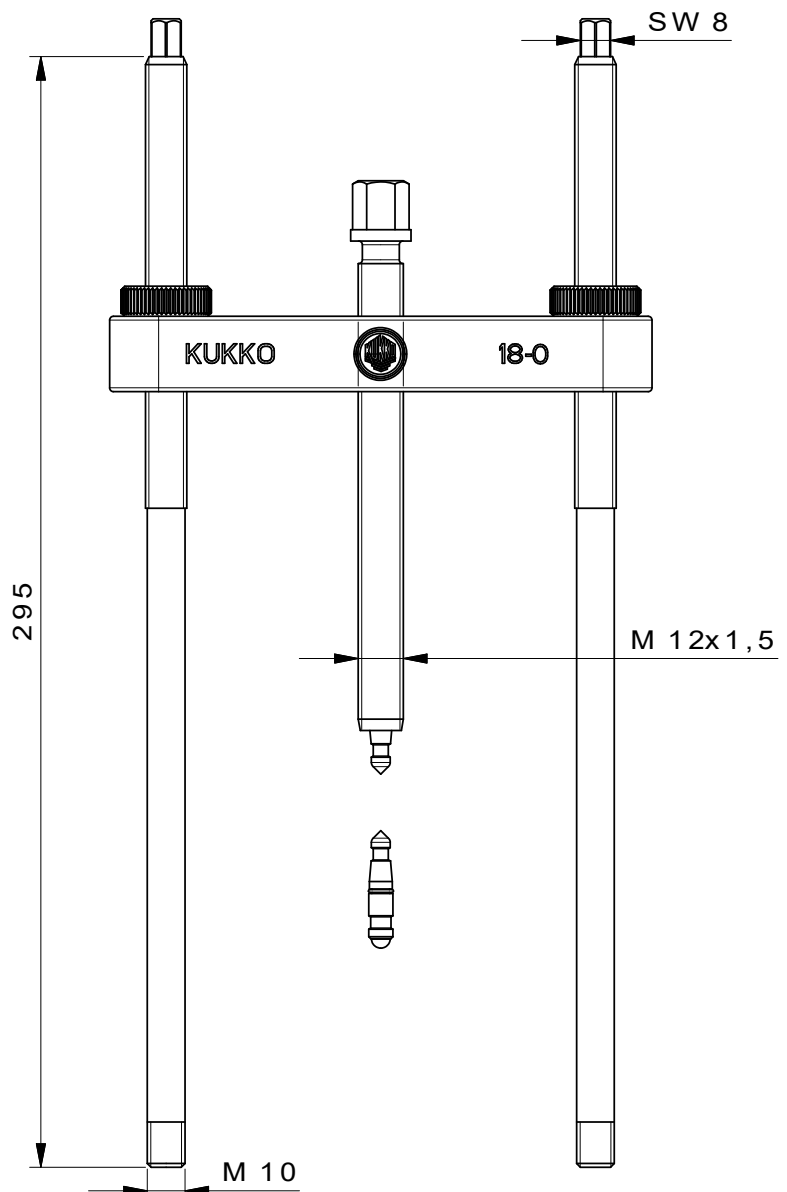
Art. No.	Product name
15-0	Separators
17-0	Separator with quick clamping pressure spindle


Part of

Art. No.	Product name
15-K	Separating-set
17-K	Separating-set with quick clamping pressure spindle
EVLW-2-INDUSTRIE	Display
WT-1-INDUSTRIE	Puller product range - industrial
WT-100+C	Puller product range - exterior pulling - BASIC+
EVLW-INDUSTRIE BASIC	Display

Spare part of

Art. No.	Product name
15-K	Separating-set
17-K	Separating-set with quick clamping pressure spindle



 Kleinbongartz & Kaiser oHG Werkzeugfabrik Hilden - Germany	Dokumentname: 18-0 Abziehvorrichtung	Toleranz: DIN ISO 2768-m
	Dokumentbeschreibung: Baugruppe	Material: Hoch legierter Werkzeugstahl / High alloy tool steel
Erstellt von: Schultes	Erstellungsdatum: 12/04/2016	Maßstab: 1:1
Teilbeschreibung: Abziehvorrichtung / Pulling device		Wärmebehandlung / Härte: Oberflächenbehandlung:
Artikelnummer / ZNR.: 18-0	Dokumentversion: -	Schutzvermerk ISO 16616 beachten