



Product name *

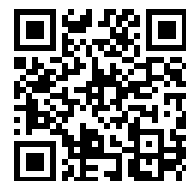
Pulling device

For use with series 17, series 15, series 18-AS and series 18-A.

Art. No. 18-3

Series 18

EAN 4021176005961



	Technical attribute	Metric	Imperial
	Distance of side screw	80 - 300 mm	3 3/16 - 11 7/8 inch
	Depth of side screw	144 - 300 mm	5 5/8 - 11 7/8 inch
	Thread	M18x1,5	M18x1,5
	Hexagon drive (male)	27 mm	
max.	Maximum load	10 t	11 US t
max.	Maximum torque	280 Nm	206.5 ft lb
	Weight	6.375 kg	



Technologies



SWITCH

A two-sided spindle tip provides optimal adjustment of the spindle to the shaft.



Spare part

Art. No.	Product name
626300	Mechanical pressure spindle.
18-3-T	Cross-beam
018355	Side bolt with nut

Accessories

Art. No.	Product name
8-02	Long hydraulic spindle
19-3-P	2 extensions for pulling devices (pair)
18-3-AS	Set of screw adapters
18-314A	Threaded adapter
18-316A	Threaded adapter
18-318A	Threaded adapter
18-320A	Threaded adapter
18-322A	Threaded adapter
18-324A	Threaded adapter
K-600-025	Set of interchangeable pressure pads for KUKKO pressure screws



Goes with

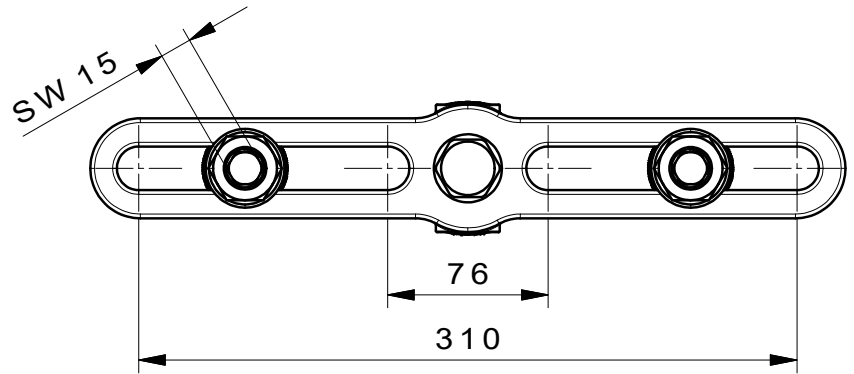
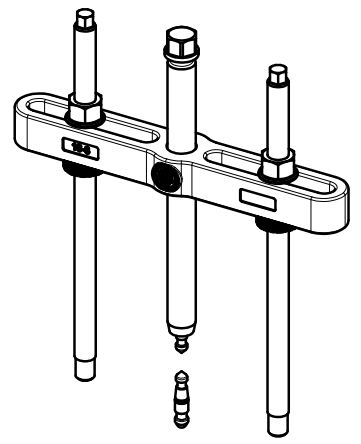
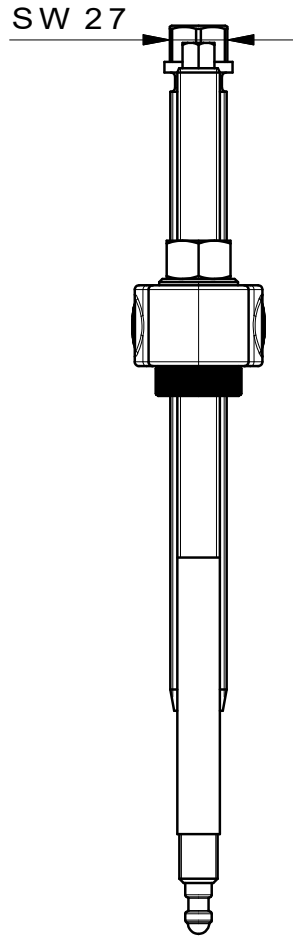
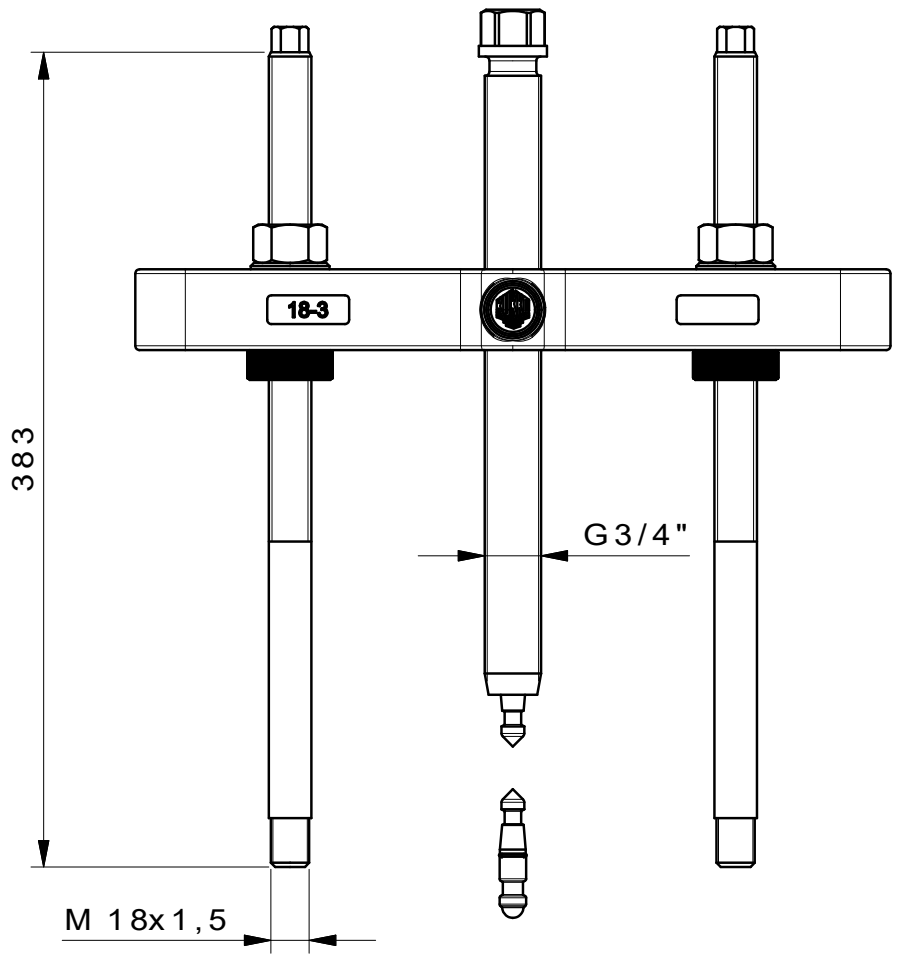
Art. No.	Product name
15-3	Separators
17-3	Separator with quick clamping pressure spindle

Part of

Art. No.	Product name
WT-030	Puller product range - automotive - axle
15-C	Separating-set
17-C	Separating-set with quick clamping pressure spindle

Spare part of

Art. No.	Product name
15-C	Separating-set
17-C	Separating-set with quick clamping pressure spindle



 Kleinbongartz & Kaiser oHG Werkzeugfabrik Hilden - Germany	Dokumentname: 18-3_Abziehvorrichtung		Toleranz: DIN ISO 2768-m	
	Dokumentbeschreibung: Baugruppe		Material: Hoch legierter Werkzeugstahl / High alloy tool steel	
	Erstellt von: Breidenbach	Erstellungsdatum: 12/04/2017	Maßstab: 1:2.5	
Teilbeschreibung: Abziehvorrichtung / Pulling device			Wärmebehandlung / Härte: -	
			Oberflächenbehandlung: -	
Artikelnummer / ZNR.: 18-3		Dokumentversion: -	Schutzvermerk ISO 16016 beachten	