



Product name

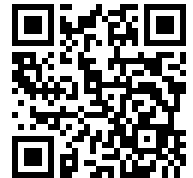
Internal extractor with segmented grasp edge








For extracting bearings, bearing outer rings and bushings that lay flat on one another.

Art. No. 21-00-E

Series 21-E

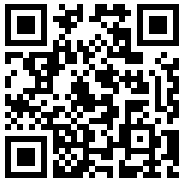
EAN 4021176909160



	Technical attribute	Metric	Imperial
	Ball bearing ISO	607; 627; 608; 619/8; 628/8; 609; 618/9; 629	607; 627; 608; 619/8; 628/8; 609; 618/9; 629
	Inner diameter of ball bearing	6,8 - 9,5 mm	1/4 - 3/8 inch
	Effective depth	30 mm	1 3/16 inch
	Length of internal extractor	54 mm	2 1/8 inch
	Number of segments	2	2
	Spanner size of the internal extractor	13 mm	
	Weight	0.05 kg	

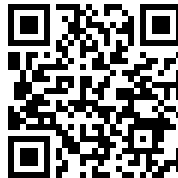


has to be accomplished with



Slide hammer device

22-0



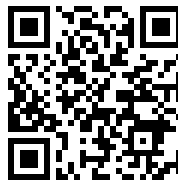
Slide hammer device

22-0-1



Counterstay

22-1



Counterstay

22-2

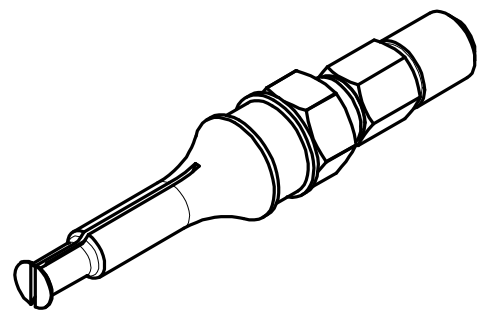
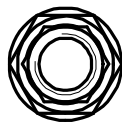
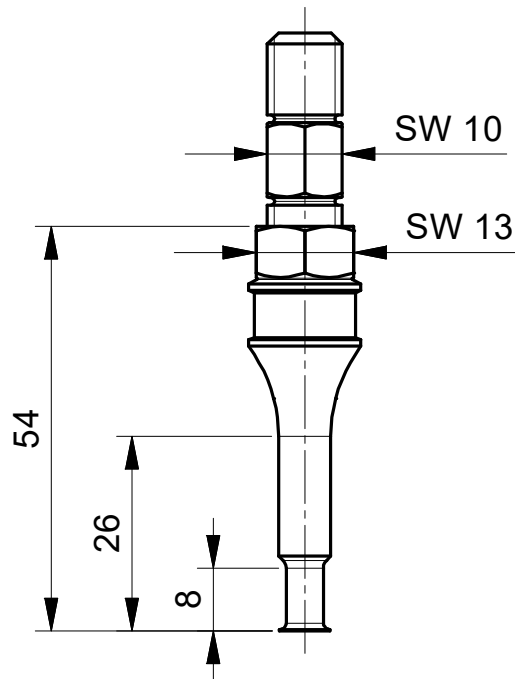
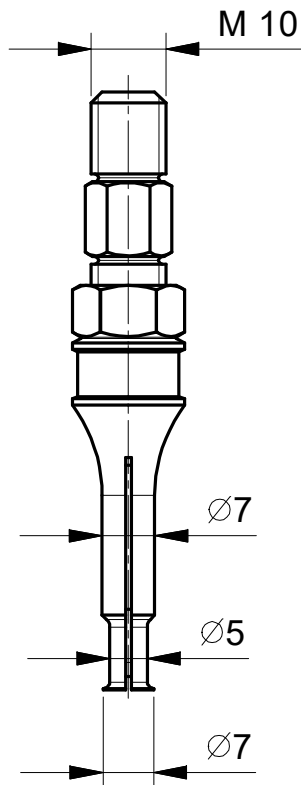
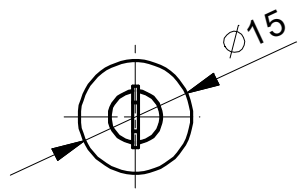


Goes with

Art. No.	Product name
22-1	Counterstay
22-2	Counterstay

Part of

Art. No.	Product name
27-A	Universal puller set
K-22-C-E	Ball bearing extracting set with counterstay and slide hammer
K-22-A-E	Ball bearing extracting set with counterstay and slide hammer



**Kleinbongartz
& Kaiser
oHG**
Werkzeugfabrik
Hilden - Germany

Dokumentname:
21-00-E_Innenauszieher

Toleranz:
DIN ISO 2768-m

Dokumentbeschreibung:
Baugruppe

Material:
Hochfester extra zäher Vergütungsstahl/
High tensile strength and toughness steel

Erstellt von:
Breidenbach

Erstellungsdatum:
14/12/2018

Maßstab:
1:1

Teilbeschreibung:

Innenauszieher mit segmentierten Greifkanten/
Internal extractor with segmented grasp edge

Wärmebehandlung / Härte:
vergüteter Stahl/ tempered steel

Oberflächenbehandlung:
-

Artikelnummer / ZNR.:
21-00-E

Dokumentversion:
-

Schutzvermerk
ISO 16016
beachten