



Product name

Internal extractor

For extracting inner bearings, bearing outer rings and bushings.

Art. No. 21-8

Series 21

EAN 4021176011726



Technical attribute

Metric

Imperial



Ball bearing ISO

6012; 6212; 6312;	6012; 6212; 6312;
6412; 16012; 61812;	6412; 16012; 61812;
61912; 6013; 6213;	61912; 6013; 6213;
6313; 16013; 61913;	6313; 16013; 61913;
6014; 6214; 6314;	6014; 6214; 6314;
16014	16014



Inner diameter of ball bearing

56 - 70 mm 2 1/4 - 2 3/4 inch



Effective depth

85 mm 3 3/8 inch



Length of internal extractor

133 mm 5 1/4 inch



Number of segments

2 2



Weight

1.43 kg

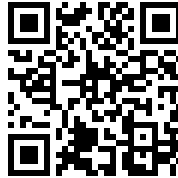


has to be accomplished with



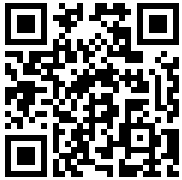
Slide hammer device

22-0-1



Counterstay

22-2



Counterstay

22-3



Goes with

Art. No.	Product name
22-2	Counterstay
22-3	Counterstay

Part of

Art. No.	Product name
24-B	Set of bearing pulling and extracting tools
25-B	Set of bearing extracting tools
28-D	Set of slide hammer and counterstays for extracting ball bearings and dowel-pins
WT-017	Puller product range - interior pulling - BASIC
WT-018	Puller product range - interior pulling - TOP
K-22-B	Ball bearing extracting set with counterstay and slide hammer

Spare part of

Art. No.	Product name
24-B	Set of bearing pulling and extracting tools
25-B	Set of bearing extracting tools



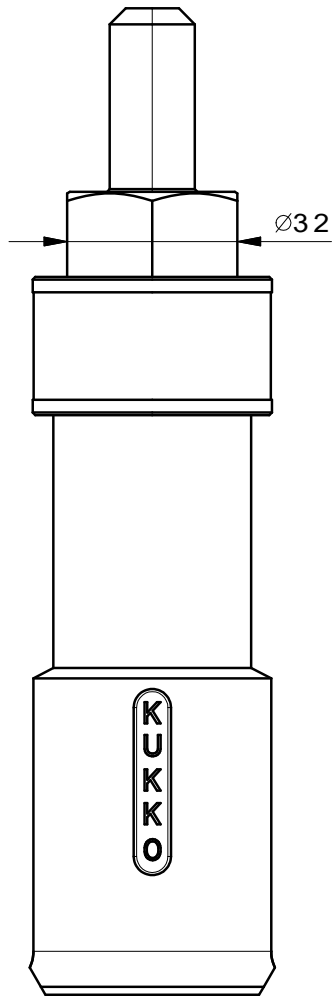
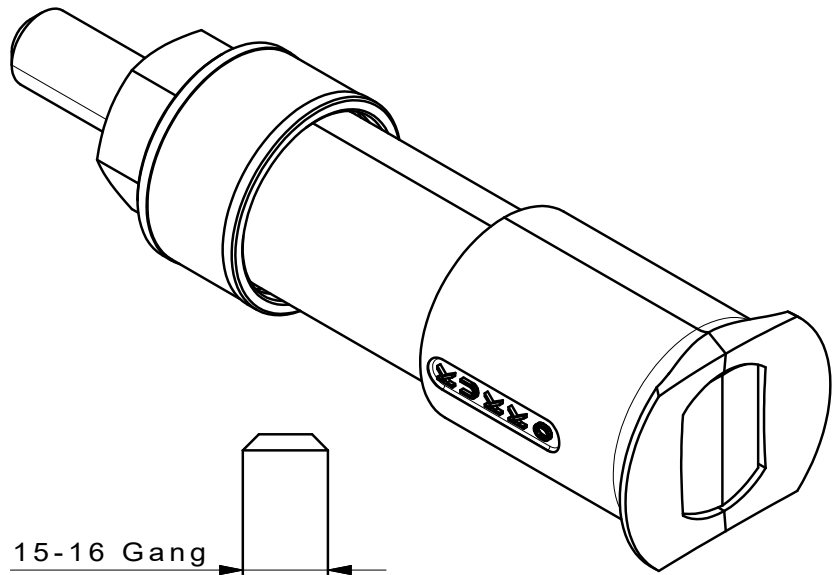
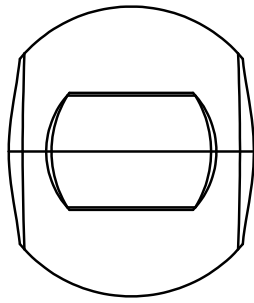
Also included in

Art. No.

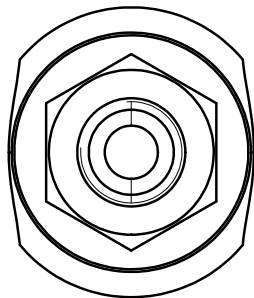
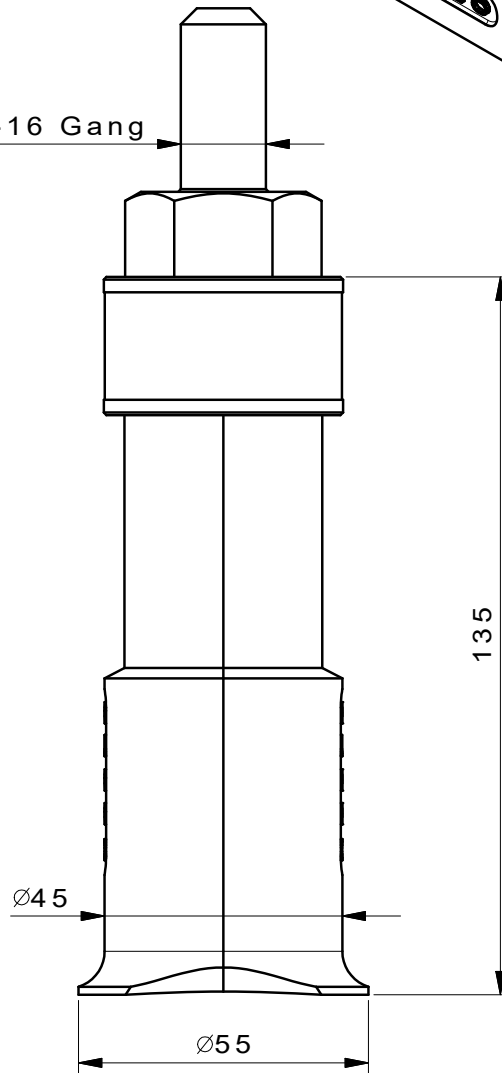
Product name

WT-018

Puller product range - interior pulling - TOP



15-16 Gang



 Kleinbongartz & Kaiser oHG Werkzeugfabrik Hilden - Germany	Dokumentname: 21-8 Innenauszieher		Toleranz: DIN ISO 2768-m
	Dokumentbeschreibung: ZSB		Material: Hochfester extra zäher Vergütungsstahl/ High tensile strength and toughness steel
Teilbeschreibung: Innenauszieher/ Internal extractor	Erstellt / Geprüft von: Schultes	Erstellungsdatum: 05/06/2015	Maßstab: 1:1
		Wärmebehandlung / Härte: vergüteter Stahl/ tempered steel	
		Oberflächenbehandlung:	
Artikelnummer / ZNR.: 21-8	Dokumentversion: -	Schutzvermerk ISO 16016 beachten	