



Product name

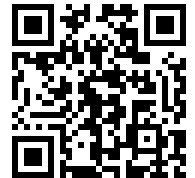
2-jaw separator puller "Cobra" with adjustable reach

For pulling bearings, gears, discs, etc. that are lying flat against one another.

Art. No. 210-1

Series 210

EAN 4021176030383



	Technical attribute	Metric	Imperial
	Spread	50 - 95 mm	2 - 3 3/4 inch
	Depth	170 mm	6 3/4 inch
	Number of possible depths	4	4
	Hexagon drive (male)	22 mm	
	Maximum load	5 t	5.5 US t
	Maximum torque	100 Nm	73.5 ft lb
	Weight	2.645 kg	
	Space below	2 mm	1/8 inch
	Space next to it	25 mm	1 inch
	Number of jaws	2	2



Technologies



SWITCH

A two-sided spindle tip provides optimal adjustment of the spindle to the shaft.



Spare part

Art. No.	Product name
204-2-T	Cross-beam
204201	Complete clamp
210-1-170-P	2 pulling jaws (pair)
621220	Mechanical pressure spindle.

Accessories

Art. No.	Product name
K-600-025	Set of interchangeable pressure pads for KUKKO pressure screws

Part of

Art. No.	Product name
WT-014	Puller product range - automotive - chassis suspension
K-204-02-210-1	Universal puller set with side clamp
WT-005	Puller product range - automotive
WT-019	Puller product range - separating
K-204-V-210-1	Universal puller set
EVLW-2-INDUSTRIE	Display
EVLW-2-KFZ	Merchandiser, automotiv pullers



Part of

Art. No.**Product name**

EVLW-2-NFZ

Merchandiser, automotive pullers / commercial vehicle / agricultural machinery

Spare part of

Art. No.**Product name**

WT-005

Puller product range - automotive

Also included in

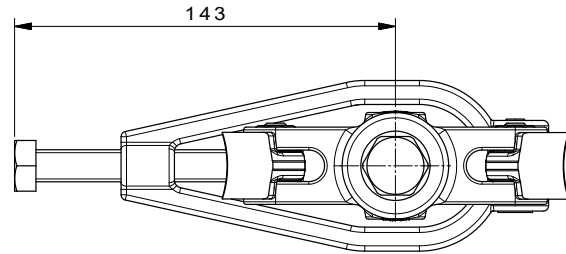
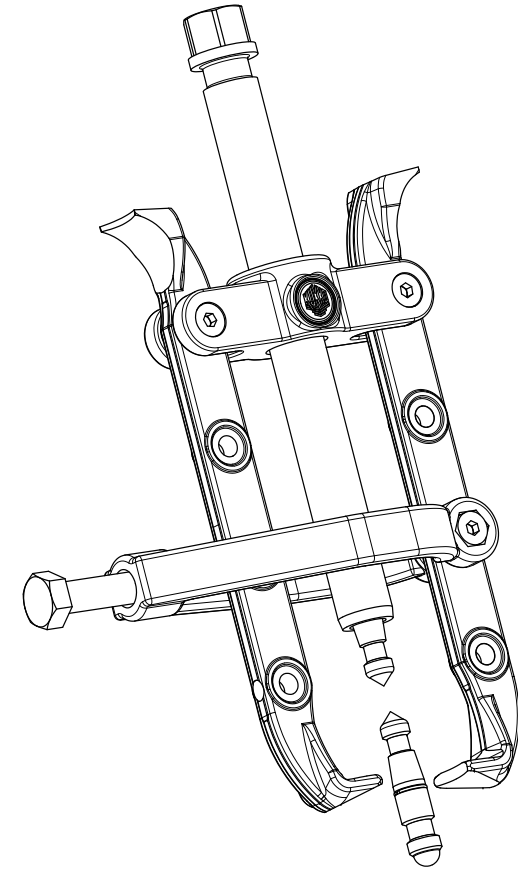
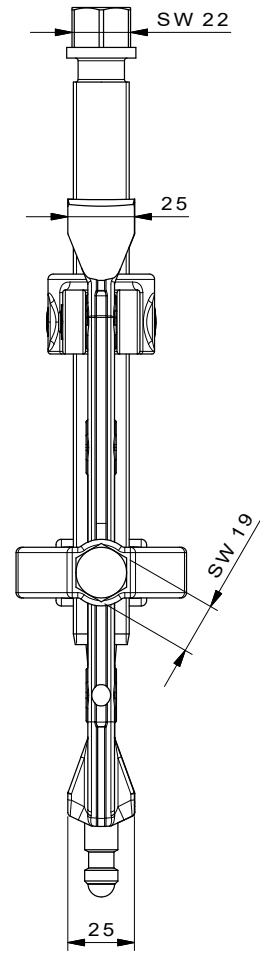
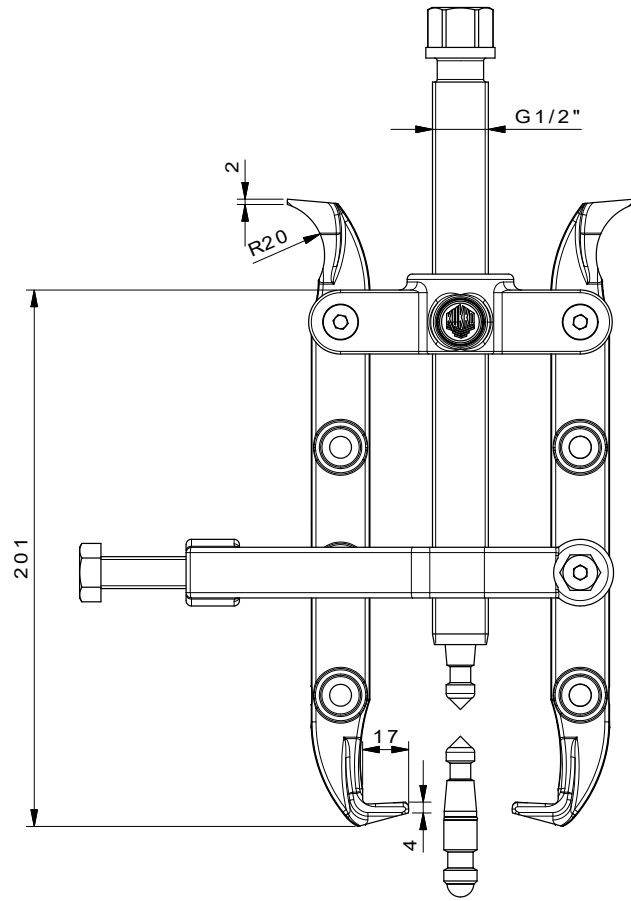
Art. No.**Product name**

WT-014

Puller product range - automotive - chassis suspension

WT-005

Puller product range - automotive



 Kleinbongartz & Kaiser oHG Werkzeugfabrik Hilden - Germany	Dokumentname: 210-1_2-armiger Trennabzieher-Cobra	Toleranz: DIN ISO 2768-m
	Material: Hoch legierter Werkzeugstahl / High alloy tool steel	Erweit. von: Schultes
Teilbeschreibung: 2-armiger Trennabzieher-Cobra / 2-jaw separator puller "Cobra" with adjustable reach	Zeichnungsdatum: 07/04/2016	Wärmebehandlung / Härte: vergüteter Stahl / tempered steel
Artikelnummer / ZNR: 210-1	Dokumentversion: -	Schutzvermerk: ISO 16949 beachten