



Product name

Slide hammer device



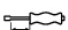
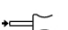



For use with series 21 and series 21-E. Series 22-1-AS only for 22-0 and 22-0-1.

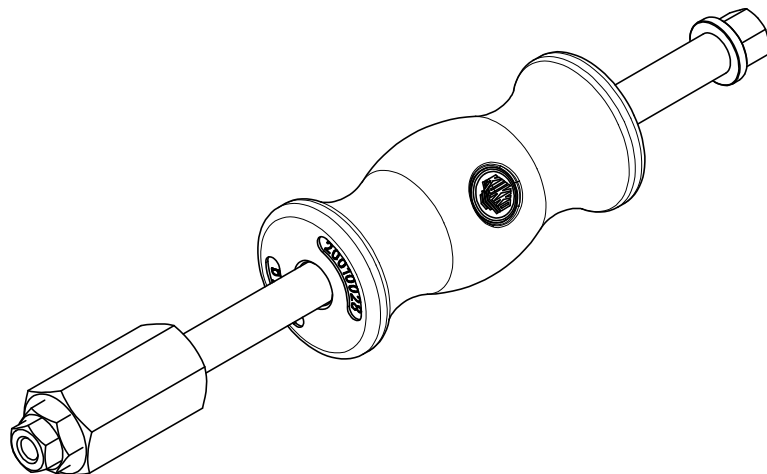
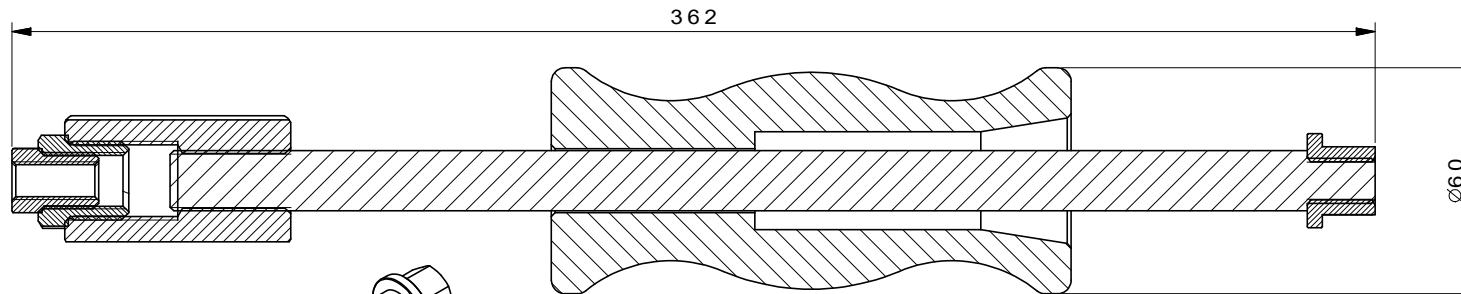
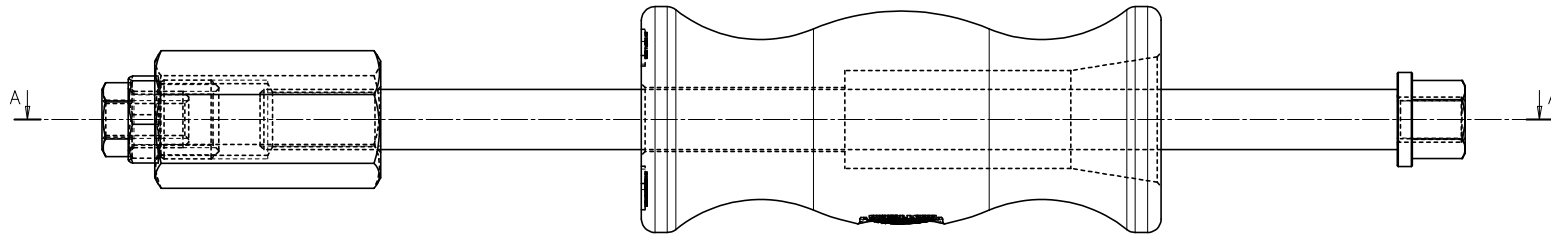
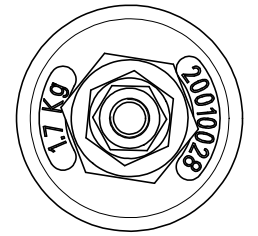
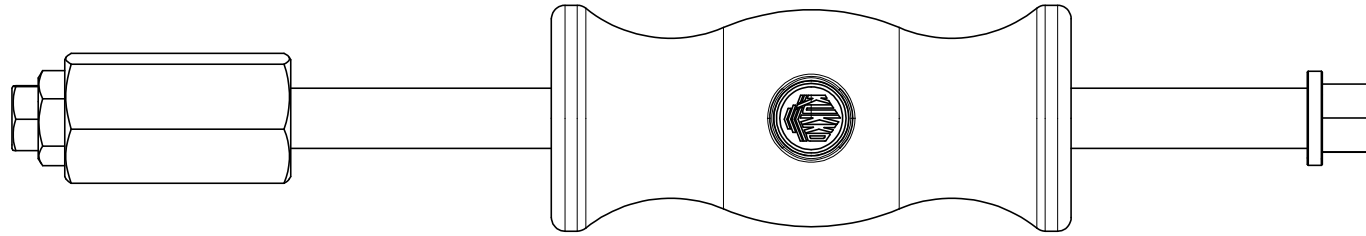
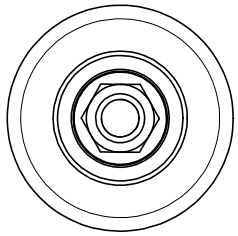
Art. No. 22-0-1

Series 22-0

EAN 4021176555558



	Technical attribute	Metric	Imperial
	Overall length of slide hammer	320 mm	12 1/4 inch
	Mass of impact	1,7 kg	
	Length of slide hammer impact area	230 mm	9 1/16 inch
	Slide hammer rod connection thread	M16 x1,5	M16 x1,5
	Internal thread	M16x1,5 - G1/2"	M16x1,5 - G1/2"
	Threaded adapters (IG + AG)	AG: G1/2" - IG: 15-16G; AG: 15-16G - IG: M10	AG: G1/2" - IG: 15-16G; AG: 15-16G - IG: M10
	Weight	2.76 kg	



 Kleinbongartz & Kaiser oHG Werkzeugfabrik Hilden - Germany	Dokumentname: 22-0-1_Gleithammer	Toleranz: DIN ISO 2768-m
	Dokumentbeschreibung: Baugruppe	Material: Hoch legierter Werkzeugstahl / High alloy tool steel
Erstellt / Geprüft von: Schultes	Erstellungsdatum: 25/09/2015	Maßstab: 1:1
Teilbeschreibung: Gleithammer/ Slide hammer device		Wärmebehandlung / Härte: -
		Oberflächenbehandlung:
Artikelnummer / ZNR.: 22-0-1	Dokumentversion: -	Schutzvermerk ISO 16016 beachten