



Nom du produit

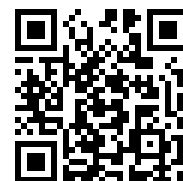
## Dispositif à masse coulissante



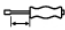
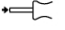



À utiliser avec les séries 21 et 21-E. Les séries 22-1-AS s'utilisent uniquement avec 22-0 et 22-0-1.

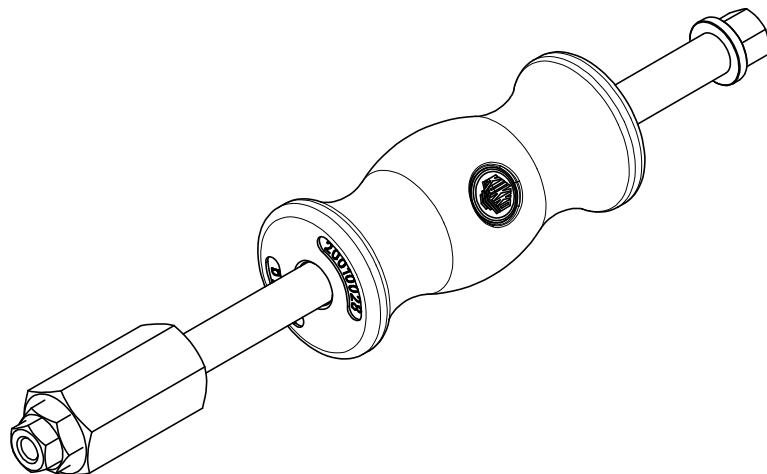
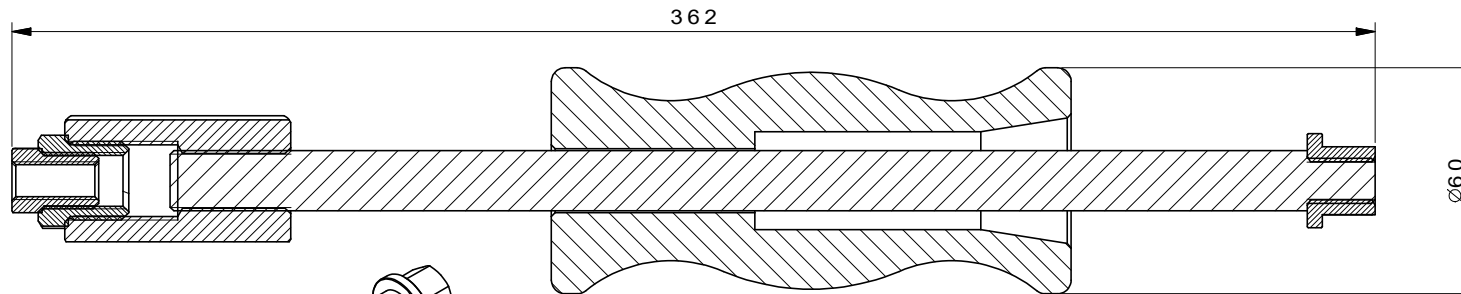
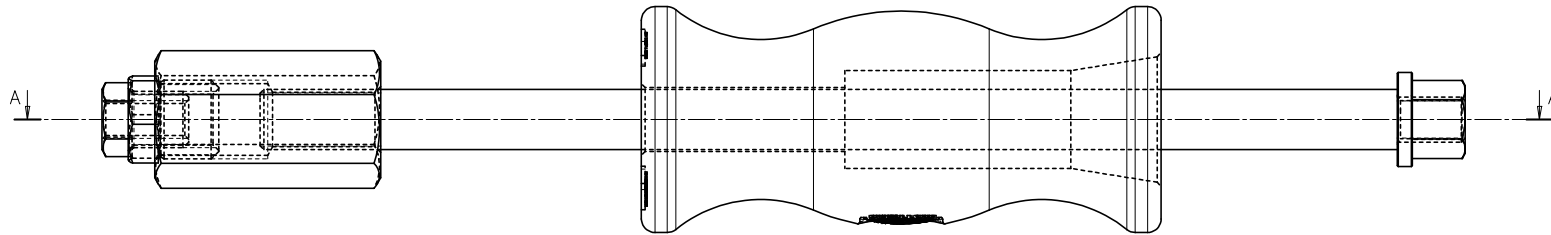
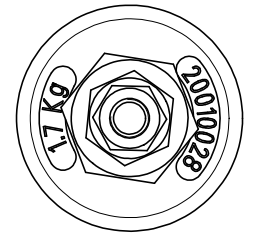
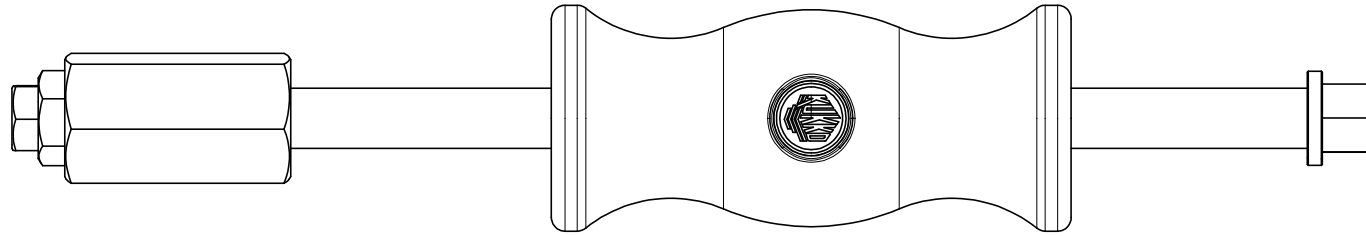
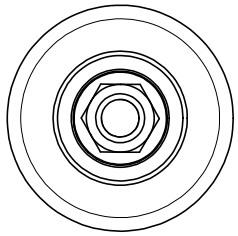
Réf. 22-0-1

Gammes 22-0

Code à barre 4021176555558



	Caractéristique technique	Métrique	Impérial
	Longueur totale masse coulissante	320 mm	12 1/4 inch
	Masse de choc	1,7 kg	
	Parcours de frappe de la masse coulissante	230 mm	9 1/16 inch
	Filetage de raccordement de la barre de masse coulissante	M16 x1,5	M16 x1,5
	Filetage intérieur	M16x1,5 - G1/2"	M16x1,5 - G1/2"
	Adaptateurs (IG + AG)	AG: G1/2" - IG: 15-16G; AG: 15-16G - IG: M10	AG: G1/2" - IG: 15-16G; AG: 15-16G - IG: M10
	Poids	2.76 kg	



 <b>Kleinbongartz &amp; Kaiser oHG Werkzeugfabrik Hilden - Germany</b>	Dokumentname: 22-0-1_Gleithammer	Toleranz: DIN ISO 2768-m
	Dokumentbeschreibung: Baugruppe	Material: Hoch legierter Werkzeugstahl / High alloy tool steel
Erstellt / Geprüft von: Schultes	Erstellungsdatum: 25/09/2015	Maßstab: 1:1
Teilbeschreibung: Gleithammer/ Slide hammer device		Wärmebehandlung / Härte: -
		Oberflächenbehandlung:
Artikelnummer / ZNR.: 22-0-1	Dokumentversion: -	Schutzvermerk ISO 16016 beachten