



Nome del prodotto

Dispositivi battenti



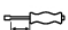
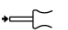



Adatto per l'utilizzo con Serie 21 e Serie 21-E. Serie 22-1-AS solo per 22-1 e 22-2.

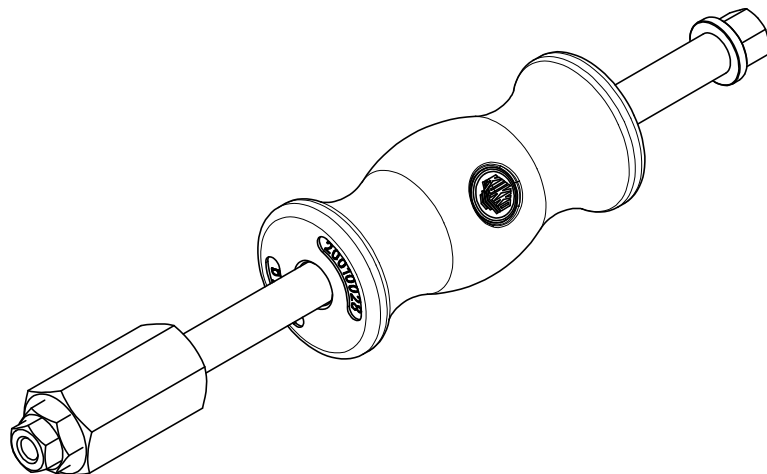
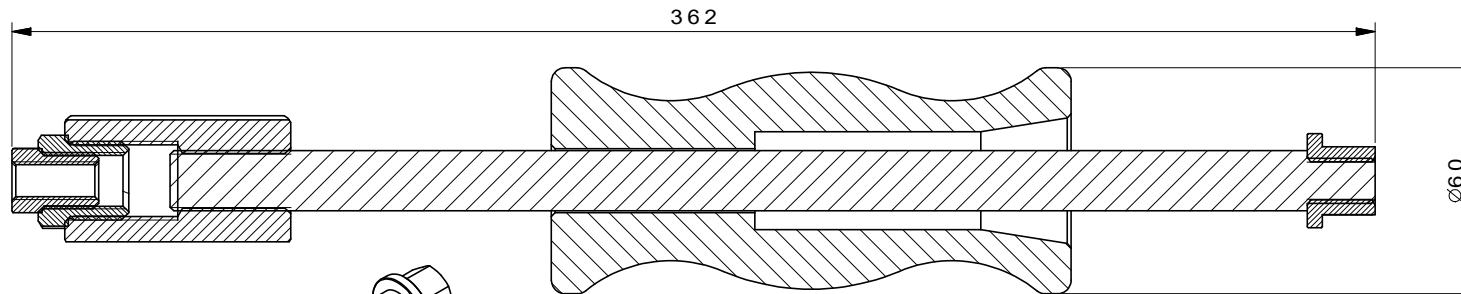
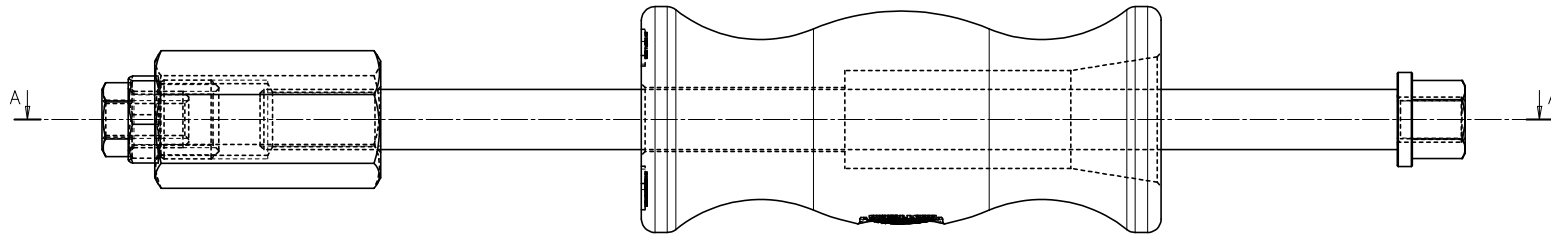
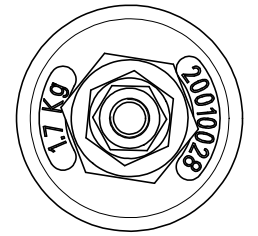
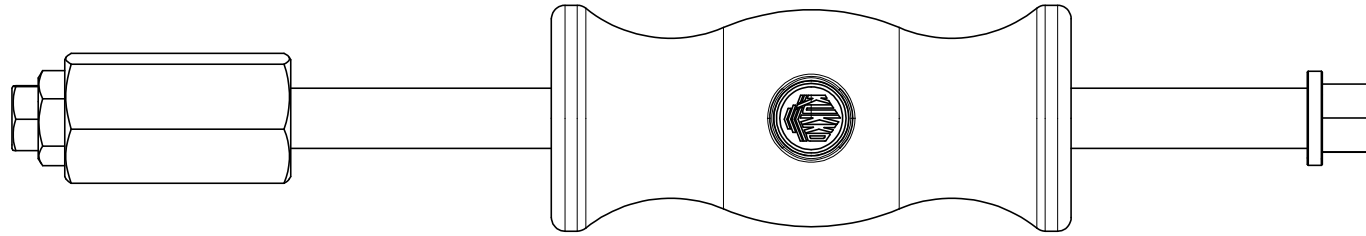
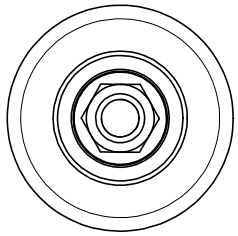
Num. art. 22-0-1

Serie 22-0

EAN 4021176555558



	Attributo tecnico	Metrico	Imperiale
	Lunghezza totale dell'estrattore a percussione	320 mm	12 1/4 inch
	Dimensioni di punzonatura	1,7 kg	
	Percorso di punzonatura dell'estrattore a percussione	230 mm	9 1/16 inch
	Filettatura di collegamento dell'asta dell'estrattore a percussione	M16 x1,5	M16 x1,5
	Filettatura interna	M16x1,5 - G1/2"	M16x1,5 - G1/2"
	Adattatore filettato (IG + AG)	AG: G1/2" - IG: 15-16G; AG: 15-16G - IG: M10	AG: G1/2" - IG: 15-16G; AG: 15-16G - IG: M10
	Peso	2.76 kg	



 Kleinbongartz & Kaiser oHG Werkzeugfabrik Hilden - Germany	Dokumentname: 22-0-1_Gleithammer	Toleranz: DIN ISO 2768-m
	Dokumentbeschreibung: Baugruppe	Material: Hoch legierter Werkzeugstahl / High alloy tool steel
	Erstellt / Geprüft von: Schultes	Erstellungsdatum: 25/09/2015
Teilbeschreibung: Gleithammer/ Slide hammer device	Maßstab: 1:1	
	Wärmebehandlung / Härte: -	
	Oberflächenbehandlung:	
Artikelnummer / ZNR.: 22-0-1	Dokumentversion: -	Schutzvermerk ISO 16016 beachten