



Nazwa produktu

## Przyrząd z młotkiem ślizgowym




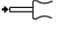



Stosowana w połączeniu z typoszeregim 21 i 21-E.  
Seria 22-1-AS tylko dla 22-0 i 22-0-1.

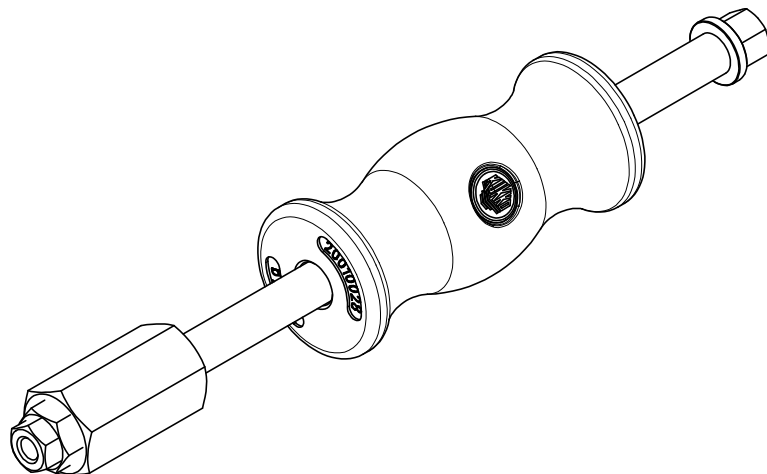
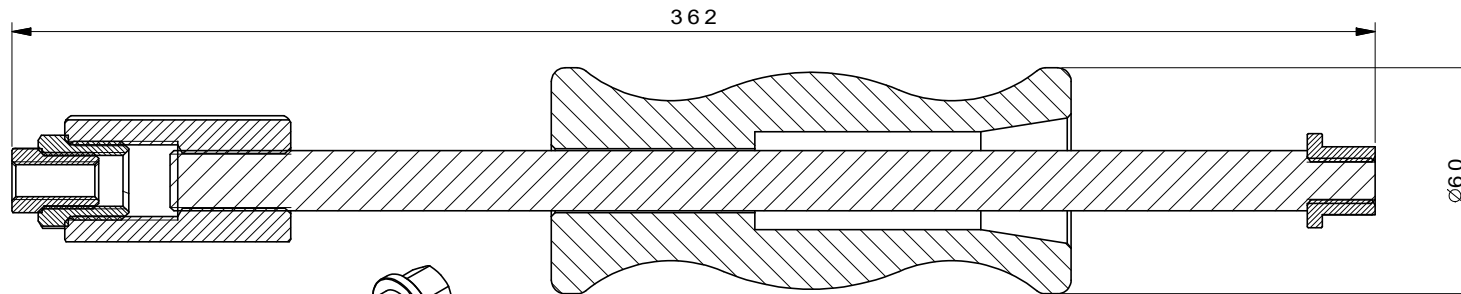
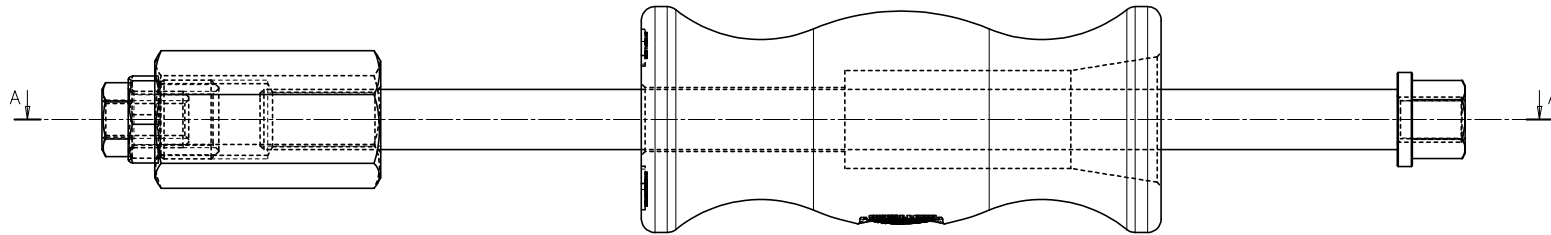
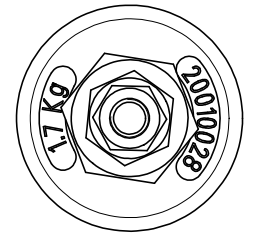
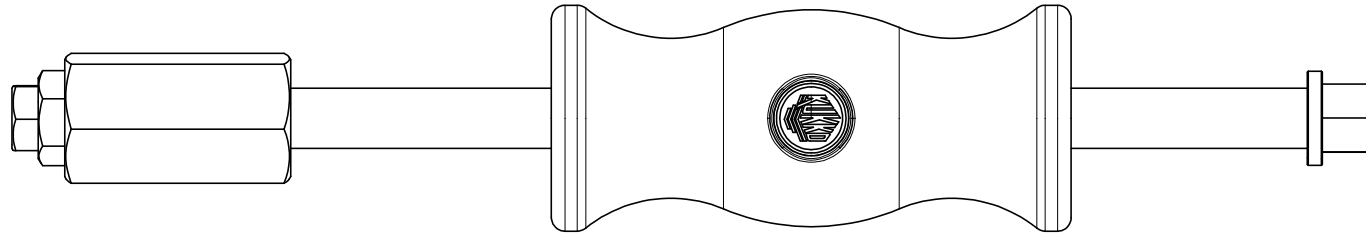
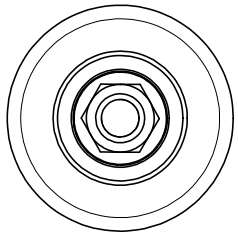
Numer artykułu 22-0-1

Seria 22-0

EAN 4021176555558



	Cecha techniczna	Metryczne	Imperial
	Długość całkowita młotka ślizgowego	320 mm	12 1/4 inch
	Masa uderzeniowa	1,7 kg	
	Zakres roboczy młotka ślizgowego	230 mm	9 1/16 inch
	Gwint przyłączeniowy młotka ślizgowego	M16 x1,5	M16 x1,5
	Gwint wewnętrzny	M16x1,5 - G1/2"	M16x1,5 - G1/2"
	Adapter gwintu (IG + AG)	AG: G1/2" - IG: 15-16G; AG: 15-16G - IG: M10	AG: G1/2" - IG: 15-16G; AG: 15-16G - IG: M10
	Ciężar	2.76 kg	



 <b>Kleinbongartz &amp; Kaiser oHG Werkzeugfabrik Hilden - Germany</b>	Dokumentname: 22-0-1_Gleithammer	Toleranz: DIN ISO 2768-m
	Dokumentbeschreibung: Baugruppe	Material: Hoch legierter Werkzeugstahl / High alloy tool steel
Erstellt / Geprüft von: Schultes	Erstellungsdatum: 25/09/2015	Maßstab: 1:1
Teilbeschreibung: Gleithammer/ Slide hammer device		Wärmebehandlung / Härte: -
		Oberflächenbehandlung:
Artikelnummer / ZNR.: 22-0-1	Dokumentversion: -	Schutzvermerk ISO 16016 beachten