



Ürün adı

Darbeli vurma kolu




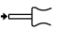



21 serisi, 21-E serisi serisi ile kullanmak için. 22-1-AS serisi sadece 22-0 ve 22-0-1 için.

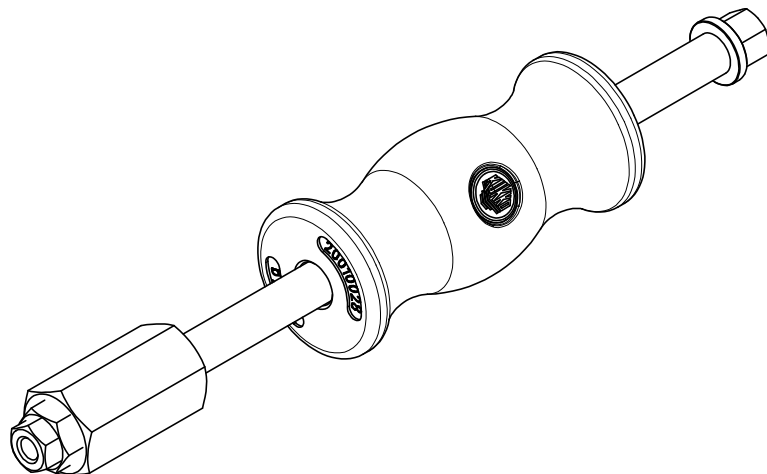
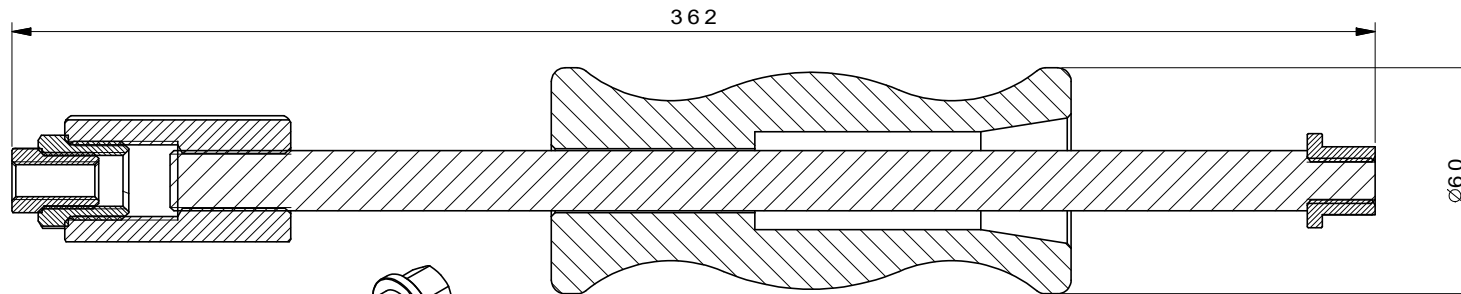
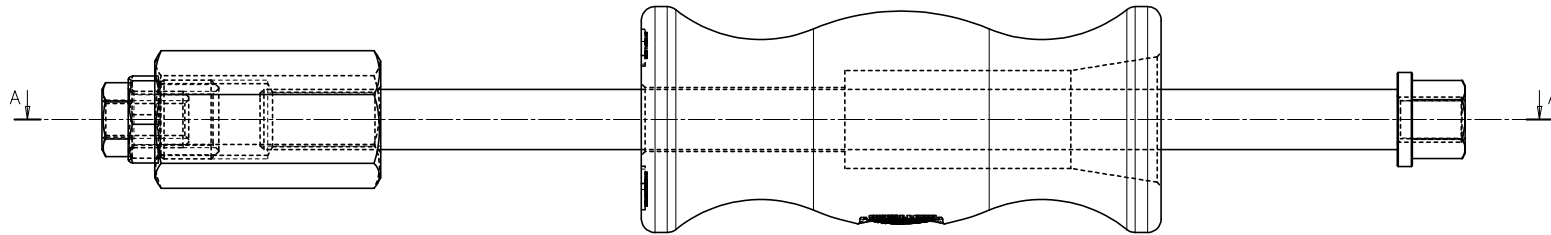
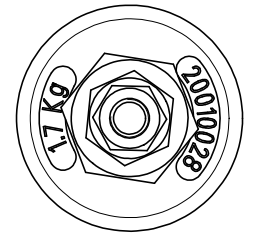
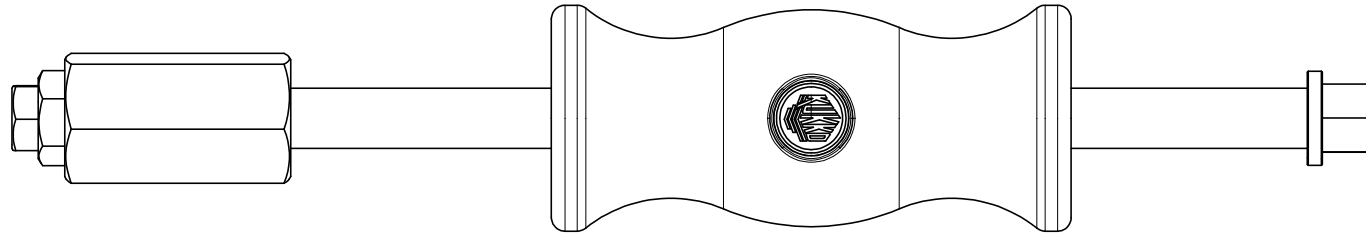
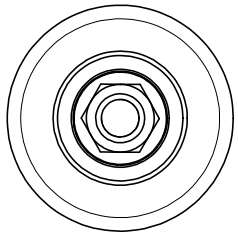
Ürün No. 22-0-1

Seriler 22-0

EAN 4021176555558



	Teknik özellik	Metrik	Imparatorluk
	Darbeli vurma kolunun toplam uzunluğu	320 mm	12 1/4 inch
	Etki kütlesi	1,7 kg	
	Darbeli vurma kolunun çarpma mesafesi	230 mm	9 1/16 inch
	Darbeli vurma kolunun vidalı bağlantı ucu	M16 x1,5	M16 x1,5
	İç dış	M16x1,5 - G1/2"	M16x1,5 - G1/2"
	Dışli adaptör (IG + AG)	AG: G1/2" - IG: 15-16G; AG: 15-16G - IG: M10	AG: G1/2" - IG: 15-16G; AG: 15-16G - IG: M10
	Ağırlık	2.76 kg	



 Kleinbongartz & Kaiser oHG Werkzeugfabrik Hilden - Germany	Dokumentname: 22-0-1_Gleithammer	Toleranz: DIN ISO 2768-m
	Dokumentbeschreibung: Baugruppe	Material: Hoch legierter Werkzeugstahl / High alloy tool steel
Erstellt / Geprüft von: Schultes	Erstellungsdatum: 25/09/2015	Maßstab: 1:1
Teilbeschreibung: Gleithammer/ Slide hammer device		Wärmebehandlung / Härte: -
		Oberflächenbehandlung: -
Artikelnummer / ZNR.: 22-0-1	Dokumentversion: -	Schutzvermerk ISO 16016 beachten