



Product name

Universal 2-jaw puller with self-centering jaws

For removing bearings, gears, discs, etc.

Art. No. 44-1

Series 44

EAN 4021176016028



	Technical attribute	Metric	Imperial
	Spread	12 - 100 mm	1/2 - 3 7/8 inch
	Depth	100 mm	3 7/8 inch
	Hexagon drive (male)	13 mm	
	Maximum load	3 t	3 US t
	Maximum torque	50 Nm	6.5 ft lb
	Weight	0.525 kg	
	Space below	7 mm	1/4 inch
	Space next to it	20 mm	3/4 inch
	Number of jaws	2	2



Technologies



SWITCH

A two-sided spindle tip provides optimal adjustment of the spindle to the shaft.



AUTOGRIP

The jaws clamp and center automatically.



Spare part

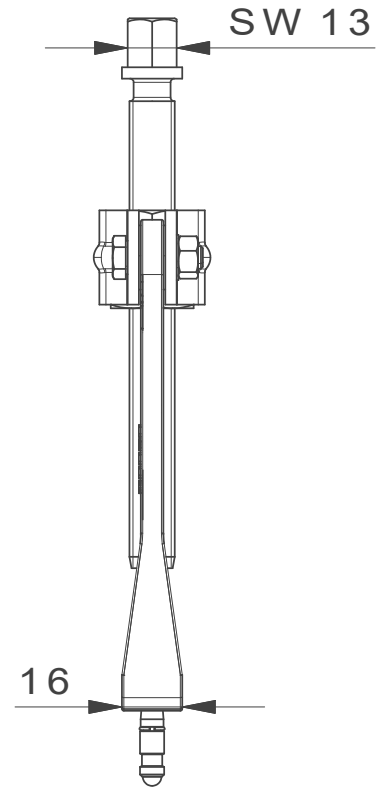
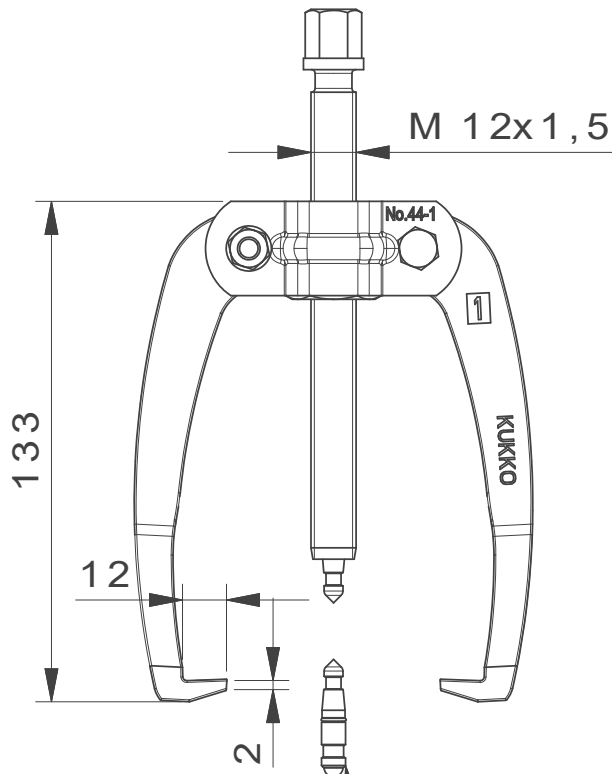
Art. No.	Product name
44-1-T	Cross-beam
44-1-100-P	2 pulling jaws (pair)
44-1-206	Cross-beam internal bushing, with spindle
612130	Mechanical pressure spindle.

Accessories

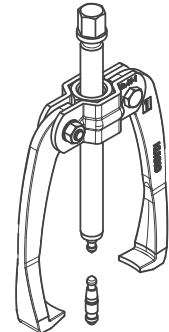
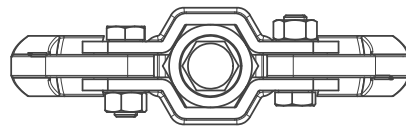
Art. No.	Product name
K-600-014	Set of interchangeable pressure pads for KUKKO pressure screws

Part of

Art. No.	Product name
EVLW-2-INDUSTRIE	Display
WT-1-INDUSTRIE	Puller product range - industrial
EVLW-INDUSTRIE BASIC	Display



Mit Wechseldruckstück



**Kleinbongartz
& Kaiser
oHG**
Werkzeugfabrik
Hilden - Germany

Dokumentname:
44-1_2-armiger Universal Abzieher

Toleranz:
DIN ISO 2768-m

Dokumentbeschreibung:
Baugruppe

Material:
Hoch legierter Werkzeugstahl /
High alloy tool steel

Erstellt von:
Breidenbach

Erstellungsdatum:
02/03/2016

Maßstab:
1:2

Teilbeschreibung:

2-armiger Universal Abzieher/
Universal 2-jaw puller with self-centering jaws

Wärmebehandlung / Härte:
vergüteter Stahl/ tempered steel

Oberflächenbehandlung:

Artikelnummer / ZNR.:
44-1

Dokumentversion:
-

Schutzvermerk
ISO 16016
beachten