



Ürün adı

Kendinden merkezlenen çekirme kancasına sahip 2 kollu universal çekirme









Yatakları, dişlileri, rondelaları vb. çıkarmak için.

Ürün No. 44-1

Seriler 44

EAN 4021176016028



	Teknik özellik	Metrik	Imparatorluk
	Açılma genişliği	12 - 100 mm	1/2 - 3 7/8 inch
	Derinlik	100 mm	3 7/8 inch
	Altıköşe geçme (erkek)	13 mm	
max.	İzin verilen maksimum yük	3 t	3 US t
	Maks. tork	50 Nm	6.5 ft lb
	Ağırlık	0.525 kg	
	Raum unterhalb	7 mm	1/4 inch
	Raum nebendran	20 mm	3/4 inch
	Çene sayısı	2	2



Teknolojiler



SWITCH

İki taraflı mil ucu sayesinde milin şaftla optimum uyumu.



AUTOGRIP

Çeneler otomatik olarak gerilir ve ortalanır.



Yedek parça

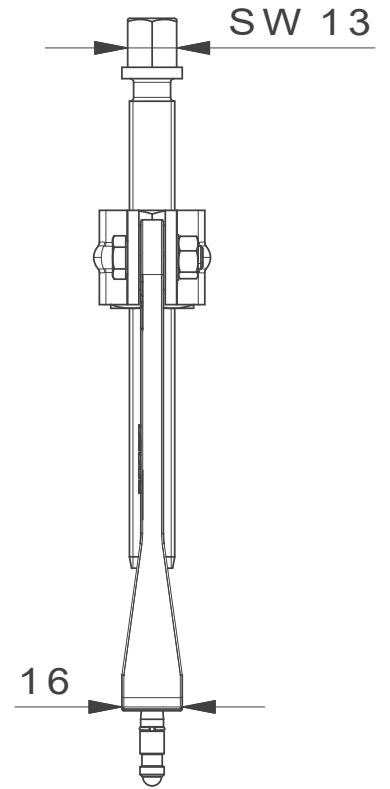
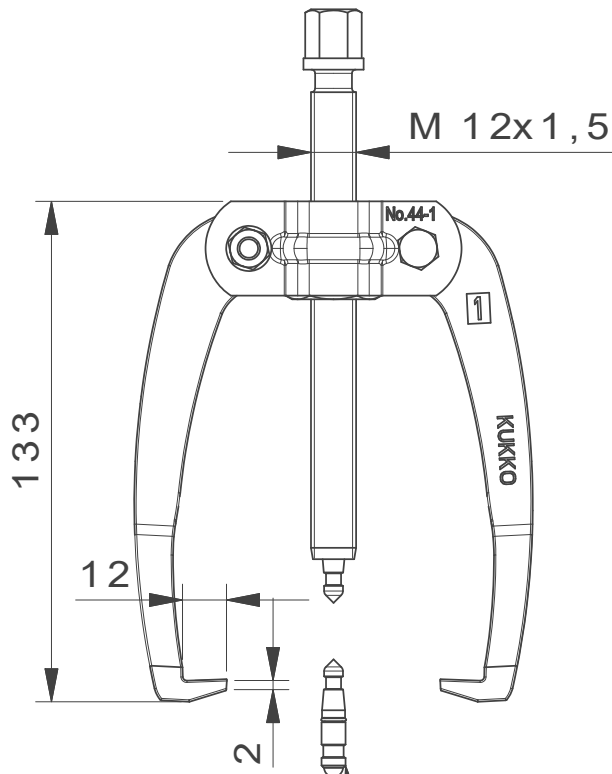
Ürün No.	Ürün adı
44-1-T	Gövde
44-1-100-P	2 çekirme kolu (çift)
44-1-206	Gövde iç burcu, miliyle
612130	Mekanik mil

Aksesuarlar

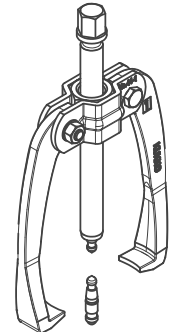
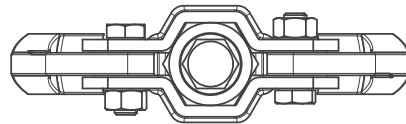
Ürün No.	Ürün adı
K-600-014	KUKKO Milleri için, "6'sı 1 arada" değiştirilebilir Mil Uç Geçme Parçaları

Parçasıdır

Ürün No.	Ürün adı
EVLW-2-INDUSTRIE	Sanayi için satış panosu
WT-1-INDUSTRIE	Çekirme ürün gamı - endüstri
EVLW-INDUSTRIE BASIC	Sanayi için satış panosu



Mit Wechseldruckstück



**Kleinbongartz
& Kaiser
oHG**
Werkzeugfabrik
Hilden - Germany

Dokumentname:
44-1_2-armiger Universal Abzieher

Toleranz:
DIN ISO 2768-m

Dokumentbeschreibung:
Baugruppe

Material:
Hoch legierter Werkzeugstahl /
High alloy tool steel

Erstellt von:
Breidenbach

Erstellungsdatum:
02/03/2016

Maßstab:
1:2

Teilbeschreibung:

2-armiger Universal Abzieher/
Universal 2-jaw puller with self-centering jaws

Wärmebehandlung / Härte:
vergüteter Stahl/ tempered steel

Oberflächenbehandlung:

Artikelnummer / ZNR.:
44-1

Dokumentversion:
-

Schutzvermerk
ISO 16016
beachten