

Nom du produit

## Dispositifs à masse coulissante

À utiliser avec les séries 21 et 21-E. Les séries 22-1-AS s'utilisent uniquement avec 22-0 et 22-0-1.




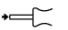



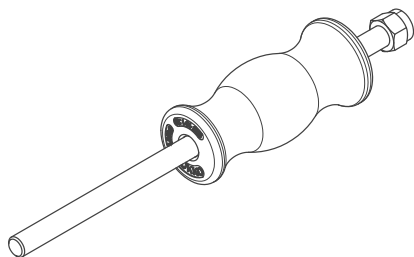
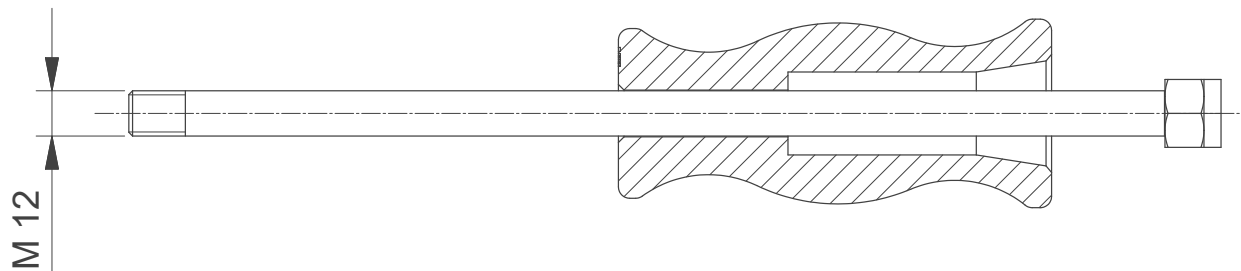
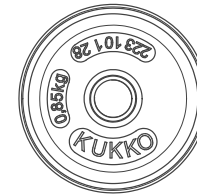
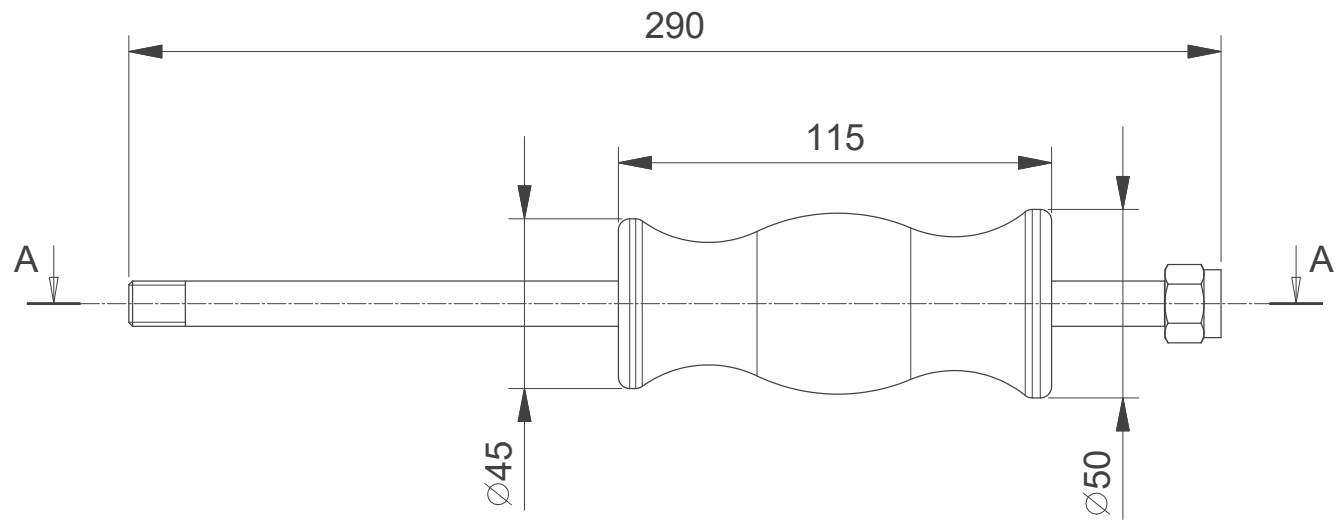
Réf. KS-22-01-GH

Gammes 22-0

Code à barre 4021176269073



	Caractéristique technique	Métrique	Impérial
	Longueur totale masse coulissante	290 mm	11 3/8 inch
	Masse de choc	0,9 kg	1.98 lbs
	Parcours de frappe de la masse coulissante	215 mm	8 1/2 inch
	Filetage de raccordement de la barre de masse coulissante	M12	M12
	Poids	1.215 kg	



 <b>Kleinbongartz &amp; Kaiser oHG</b> <b>Werkzeugfabrik Hilden - Germany</b>	Dokumentname: KS-22-01-GH_Gleithammer 0,85kg		Toleranz: DIN ISO 2768-m
	Dokumentbeschreibung: Baugruppe		Material: Vergütungsstahl/ heat treatable steel
	Erstellt von: Breidenbach	Erstellungsdatum: 05/10/2017	Maßstab: 1:2
Teilbeschreibung: Gleithammer 0,85kg/ slide hammer 0,85kg		Wärmebehandlung / Härte: -	
		Oberflächenbehandlung: -	
Artikelnummer / ZNR.: KS-22-01-GH	Dokumentversion: -	Schutzvermerk ISO 16016 beachten	